



Unit 5, 16 Powers Rd
 Seven Hills NSW 2147
 +61 2 9674 3200
 Office@winterbottom.com.au

Locally stocked colours

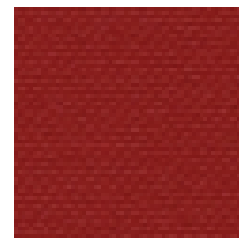
Arbelave Buckram



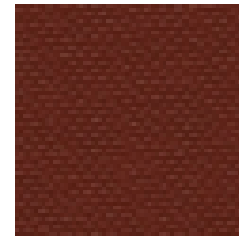
2011



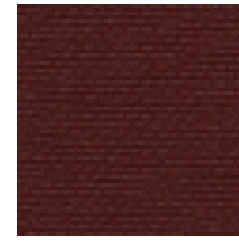
2086



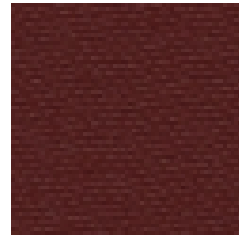
2000



2574



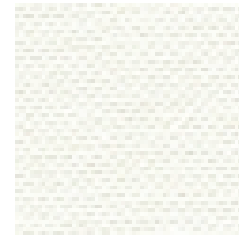
2079



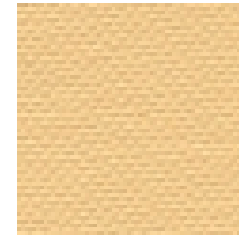
2001



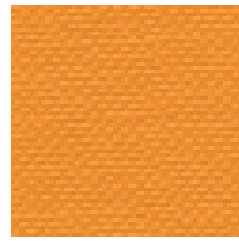
2081



2595



2096



2087



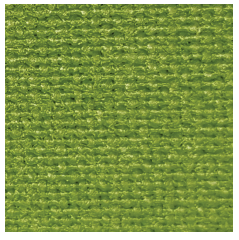
2569



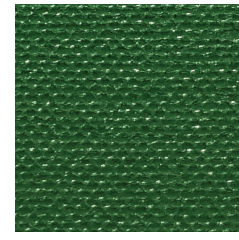
2571



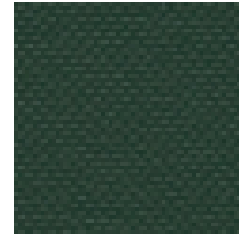
2036



2007



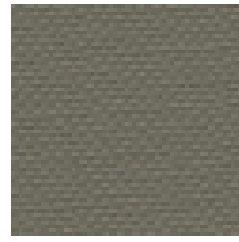
2008



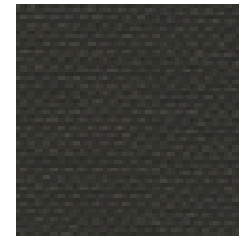
2034



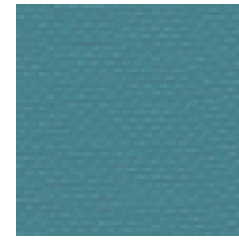
2016



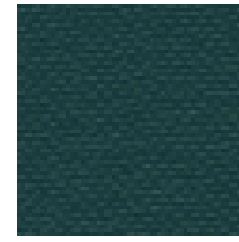
2013



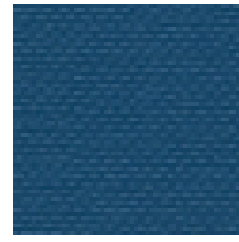
2596



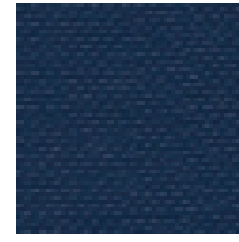
2005



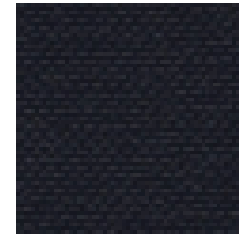
2019



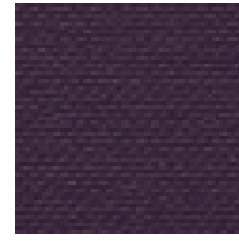
2004



2014



2082



2017

Product Information

High quality, strong, durable coated buckram
 A product of FiberMark Red Bridge International

Product Features

Decorative/Supple Coverings
 Turned Edge & Supple Wrap Materials
 Wovens & Coated Cloths
 Textiles

Print Method

Screen Print
 Digital Print

Decorating Techniques

Deboss/Blind Stamp
 Foil Stamp

Market and Applications

Publishing - Cover Materials
 Album / Photobook Cover
 Hand / Mechanical Binding
 Library Binding
 Menu / Hospitality
 Pattern Books & Swatches
 Records Management - Office / Home / School
 Archival

Roll Size

1040mm x 50 Mtr

More colours available overseas, please contact us for more information.